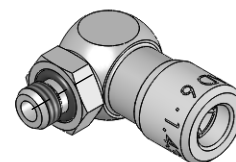


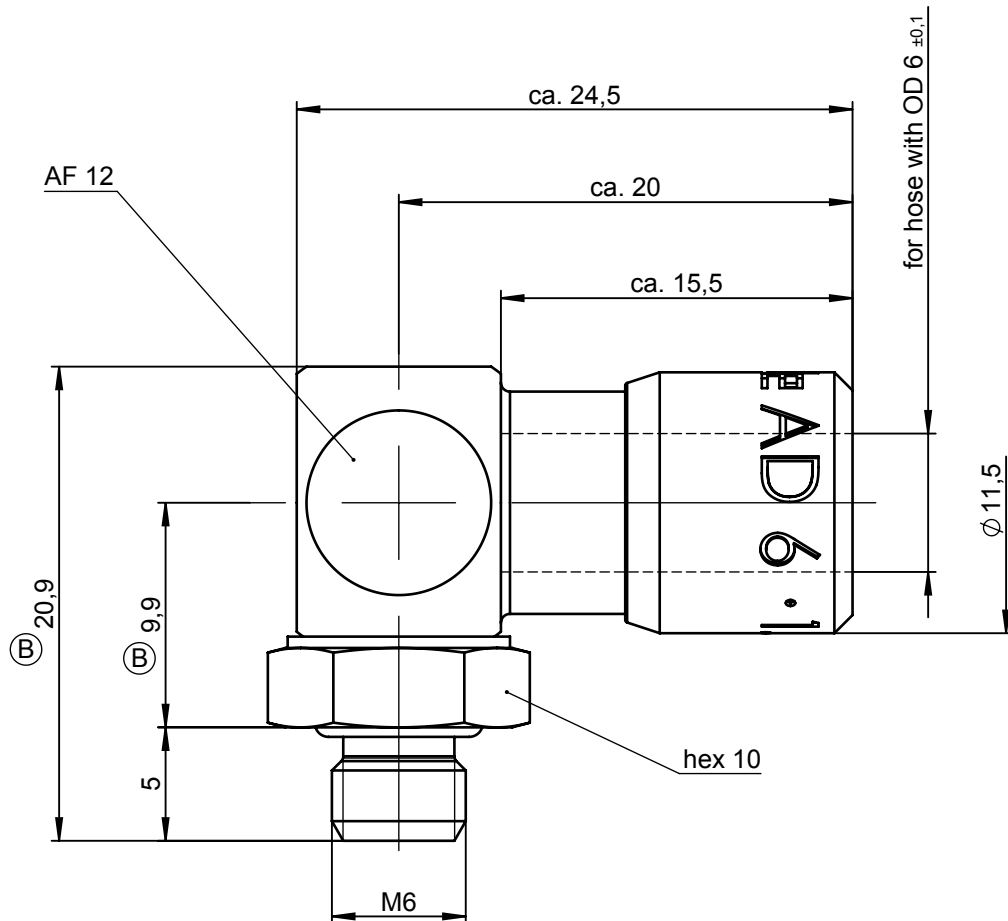
Technical drawing of a 6-kt.10 hose clamp. The drawing shows the front and side views with the following dimensions and labels:

- SW 12**: Label pointing to the top flange.
- ca. 24,5**: Overall length of the clamp.
- ca. 20**: Length of the top flange.
- ca. 15,5**: Length of the bottom flange.
- für Schlauch mit Außen - \varnothing 6 $\pm 0,1$** : Label indicating the clamp is for a hose with an outer diameter of 6 mm $\pm 0,1$.
- \varnothing 11,5**: Outer diameter of the clamp body.
- 6-kt.10**: Label pointing to the bottom flange.
- M6**: Thread specification for the bottom flange.
- 5**: Thickness of the bottom flange.
- 9,9**: Thickness of the top flange.
- 20,9**: Total thickness of the clamp.

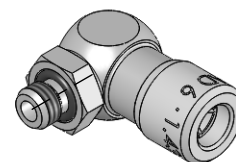


M 1:1

			Allgemeintoleranzen nach DIN ISO 2768-mH-E		Maßblatt		Gewicht ca. 16 g	
Status: FREIGABE EINFACH				Datum	Name	Benennung Winkel-Einschraubanschluss schwenkbar		Maßstab 3:1
Revision (Index): B			Erstellt	22.10.08	Ha			
			Freig.	22.10.08	Am			
			Kunde			Artikel-Nr. 987-4604		ISO E 
			Eisele			Zeichng.-Nr. 987-4604-00		
						Ersatz für vom Index		
Datum	geändert	geprüft						Blatt 1 von 2
28.10.15	Oe	Mü						

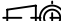


ND 3



M 1:1

Material stainless steel 1.4301
Seals FPM

			Standard Tolerances DIN ISO 2768-mH-E		Dimension Sheet		Weight ca. 16 g			
Status: FREIGABE EINFACH				Date	Name	Title Elbow screw-in connector swiveling		Scale		
Revision (Index): B			Drawn	22.10.08	Ha			3:1		
			Appr.	22.10.08	Am					
			Client			Part-No. 987-4604		ISO E		
			Eisele			Drawing-No. 987-4604-00				
						in exchange for		replaced with		Blatt 2 von 2
Date			modified		verified		Date		Revision	
28.10.15			Oe		Mü		Date		Revision	