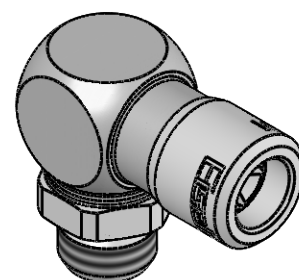


Technical drawing of a hose clamp (Eigelle A) with dimensions and labels:

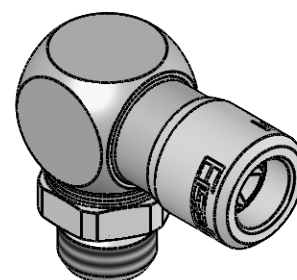
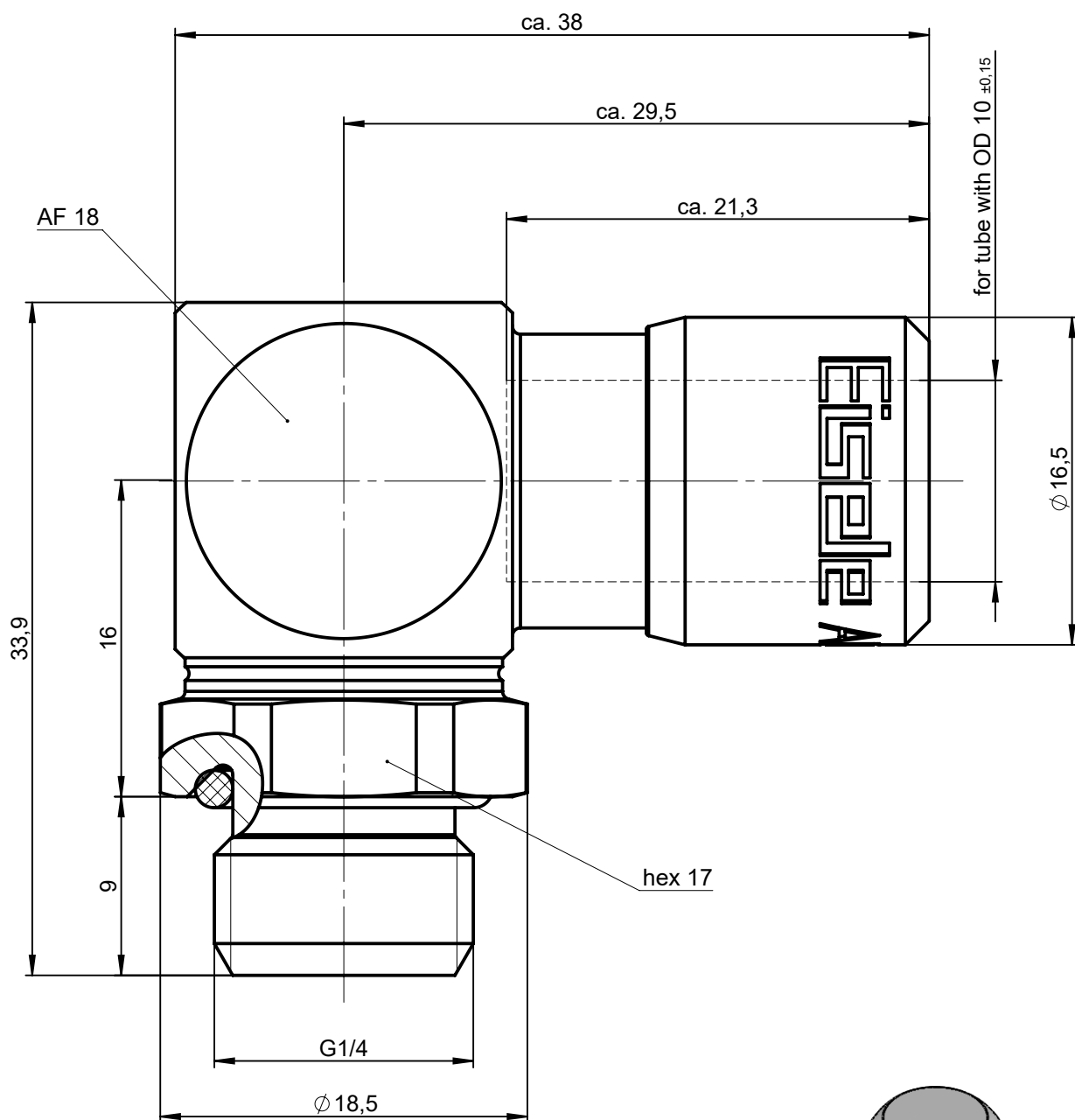
- Overall length: ca. 38
- Length of the main body: ca. 29,5
- Length of the adjustment screw: ca. 21,3
- Width of the main body: $\varnothing 16,5$
- Width of the adjustment screw: $\varnothing 18,5$
- Thread of the adjustment screw: G1/4
- Label: Eigelle A
- Label: 6-kt. 17 (pointing to the adjustment screw)
- Label: SW 18 (pointing to the adjustment screw)
- Label: für Schlauch mit Außen- $\varnothing 10 \pm 0,15$
- Dimensions: 33,9, 16, 9



1:1

			Allgemeintoleranzen nach DIN ISO 2768-mH-E			<div>Maßblatt</div>			Gewicht ca. 57 g		
Status: FREIGABE EINFACH				Datum	Name	<div>Benennung</div> <div>Winkel-Einschraubanschluss schwenkbar</div>			<div>Maßstab</div> <div>3:1</div>		
<div>Revision (Index):</div> <div>A</div>			Erstellt	26.06.13	FT						
			Freig.	04.02.20	Ge						
			Kunde			Artikel-Nr. 986-0408			<div>ISO E</div> <div></div>		
			<div>Eisele</div>			Zeichng.-Nr. 986-0408-00					
Datum	geändert	geprüft							Ersatz für vom Index		
									Blatt 1 von 2		

All rights to these drawings belong exclusively to the company Eisele Pneumatics GmbH & Co. KG. The reproduction and / or dissemination and other abuse without our prior, explicit consent are inadmissible. Those who do not follow these directions are obliged to pay damages and are punishable by law.



ND 8

1:1

Material: 1.4301 (304) stainless steel
Seals: FKM

			Standard Tolerances DIN ISO 2768-mH-E		Dimension Sheet	Weight ca. 57 g	
Status: FREIGABE EINFACH			Date	Name		Scale	
Revision (Index):			Drawn	26.06.13	FT	3:1	
A			Appr.	04.02.20	Ge		
			Client			ISO E	
						Part-No. 986-0408	
						Drawing-No. 986-0408-00	
						in exchange for	
Date	modified	verified				replaced with	Blatt 2 von 2
						Date	Revision

Eisele