
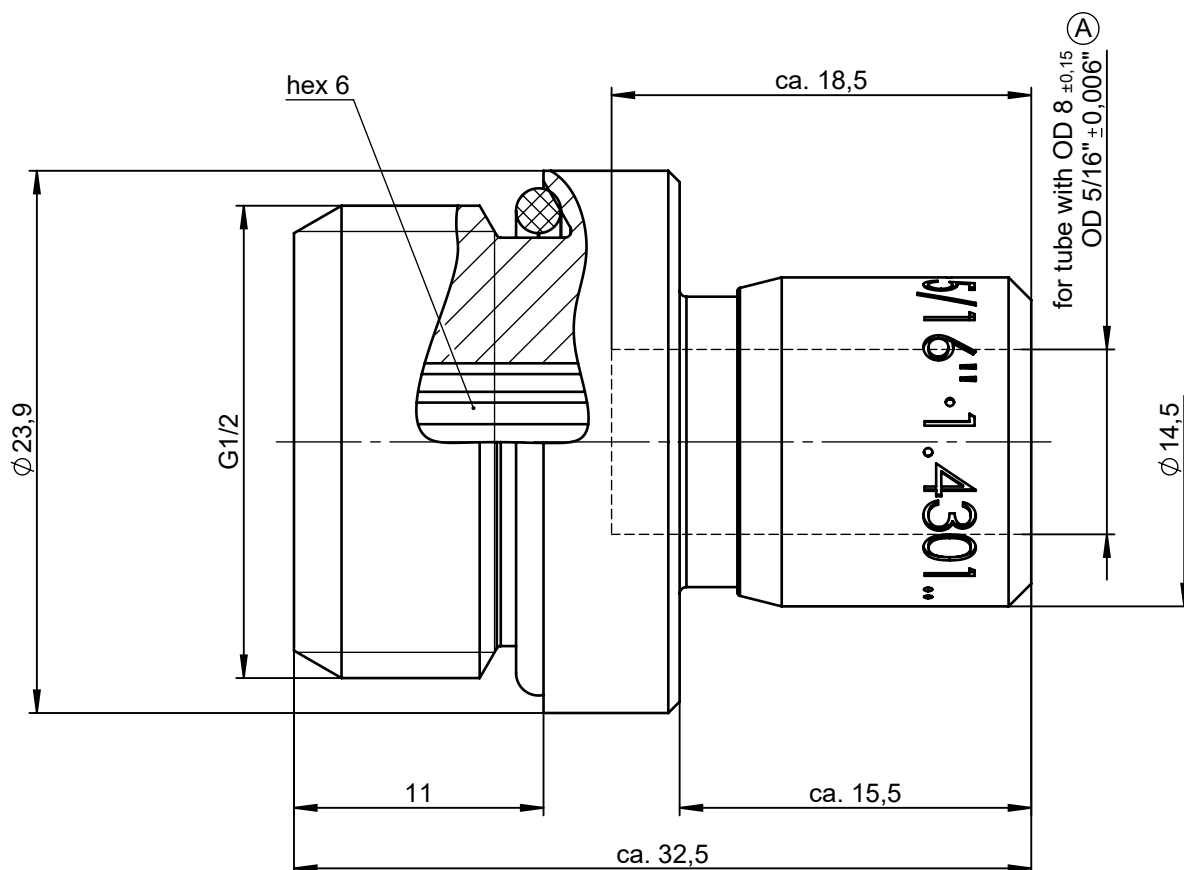
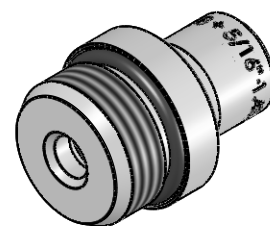


			Allgemeintoleranzen nach DIN ISO 2768-mH-E		Maßblatt		Gewicht ca. 51 g	
Status: FREIGABE EINFACH				Datum	Name	Benennung		Maßstab
Revision (Index): <div>A</div>			Erstellt	21.06.13	FT	Einschraubanschluss gerade		3:1
			Freig.	11.10.13	Mü			
			Kunde			Artikel-Nr.	962-0806	
			<div>Eisele</div>		Zeichng.-Nr.		962-0806-00	ISO E 
					Ersatz für vom		Index	Ersetzt durch vom
Datum	geändert	geprüft					Blatt 1 von 2	
29.01.20	Ge	Sk						

All rights to these drawings belong exclusively to the company Eisele Pneumatics GmbH & Co. KG. The reproduction and / or dissemination and other abuse without our prior, explicit consent are inadmissible. Those who do not follow these directions are obliged to pay damages and are punishable by law.



ND 6,2 (A)



1:1

Material: 1.4301 (304) stainless steel
Seals: FKM

Standard Tolerances DIN ISO 2768-mH-E				Dimension Sheet		Weight ca. 51 g	
Status: FREIGABE EINFACH				Title		Scale	
Revision (Index):				screw-in connector straight		3:1	
Date				Part-No.		ISO E	
modified				Drawing-No.		Blatt 2 von 2	
verified				in exchange for		replaced with	
Date				Date		Revision	
Ge				Revision		Revision	
Sk				Revision		Revision	