
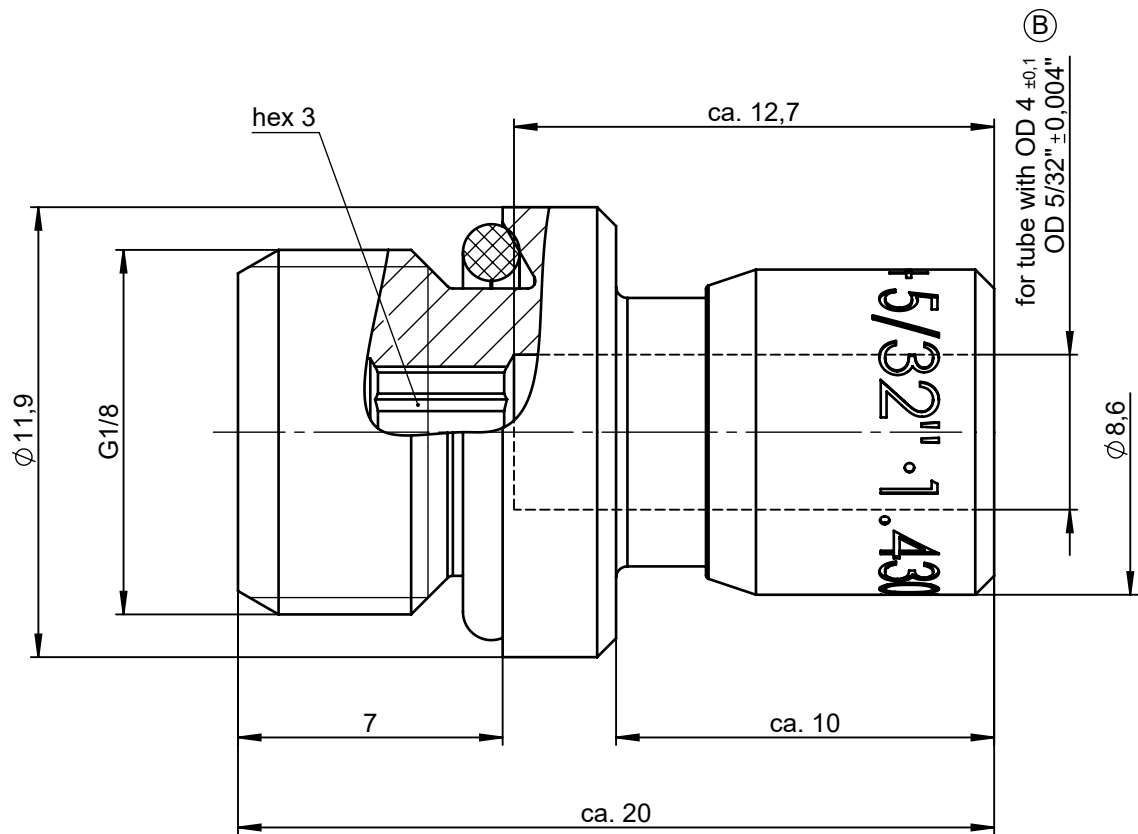
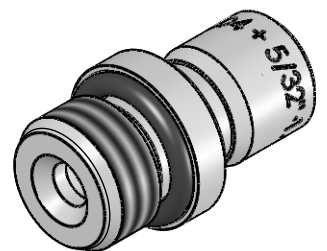


			Allgemeintoleranzen nach DIN ISO 2768-mH-E		Maßblatt		Gewicht ca. 7 g
Status: FREIGABE EINFACH				Datum	Name	Benennung  Einschraubanschluss gerade	Maßstab  5:1
Revision (Index):  <b>B</b>			Erstellt	05.03.13	Co		
			Freig.	07.03.13	Ha		
			Kunde				
			<b>Eisele</b>		Artikel-Nr. 962-0202		ISO E 
					Zeichng.-Nr. 962-0202-00		
Datum	geändert	geprüft	<b>Eisele</b>		Ersatz für vom Index		Ersetzt durch vom Index
29.01.20	Ge	Sk					
Blatt 1 von 2							

All rights to these drawings belong exclusively to the company Eisele Pneumatics GmbH & Co. KG. The reproduction and / or dissemination and other abuse without our prior, explicit consent are inadmissible. Those who do not follow these directions are obliged to pay damages and are punishable by law.





ND 3,2 (B)



2:1

Material: 1.4301 (304) stainless steel  
Seals: FKM

			Standard Tolerances DIN ISO 2768-mH-E		Dimension Sheet			Weight ca. 7 g		
Status: FREIGABE EINFACH				Date	Name	screw-in connector straight			Scale	
Revision (Index):  <div>B</div>			Drawn	05.03.13	Co				5:1	
			Appr.	07.03.13	Ha					
			Client			Part-No. 962-0202				
			<div>Eisele</div>			Drawing-No. 962-0202-00			ISO E 	
Date		modified				verified	in exchange for Date Revision replaced with Date Revision			
29.01.20		Ge				Sk				
								Blatt 2 von 2		