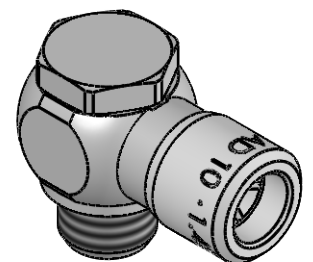


			Allgemeintoleranzen nach DIN ISO 2768-mH-E		<div>Maßblatt</div>		Gewicht ca. 59 g					
Status: FREIGABE EINFACH				Datum	Name	<div>Benennung</div> <div>Schwenkanschluss einfach kurze Ausführung</div>			Maßstab			
<div>Revision (Index):</div> <div>0</div>			Erstellt	22.01.20	Sk				3:1			
			Freig.	24.01.20	Si							
			Kunde			Artikel-Nr. 934-0408K			ISO E 			
			<div>Eisele</div>			Zeichng.-Nr. 934-0408K-00						
Datum		geändert	geprüft	<div>Eisele</div>			Ersatz für vom Index		Ersetzt durch vom Index		Blatt 1 von 2	


Technical drawing of a 10x1.4301 stainless steel tube fitting. The drawing shows a side view and a top view. The side view shows a hexagonal base with a central circular hole, a hexagonal neck, and a cylindrical body. The top view shows a hexagonal base with a central circular hole, a hexagonal neck, and a cylindrical body. Dimensions are given in mm.

Key dimensions and features:

- Overall length: 29,8
- Hexagonal base width: 17,7
- Hexagonal base height: 17,7
- Hexagonal neck width: 17,7
- Hexagonal neck height: 9
- Cylindrical body diameter:  $\varnothing 16,5$
- Cylindrical body length: 16,5
- Thread: G1/4
- Material: 10 x 1.4301
- Tube compatibility: for tube with OD 10  $\pm 0,15$
- Hexagonal base width: ca. 39
- Hexagonal base height: ca. 29
- Hexagonal neck width: ca. 21,3
- Hexagonal neck height: ca. 17
- Hexagonal base width: AF 20
- Hexagonal base height: hex 17



ND 7,2

			Standard Tolerances DIN ISO 2768-mH-E		<b>Dimension Sheet</b>				Weight ca. 59 g	
Status: FREIGABE EINFACH				Date	Name		Title  single swivel connector short model			Scale
Revision (Index):  <b>0</b>			Drawn	22.01.20	Sk					<b>3:1</b>
			Appr.	24.01.20	Si					
			Client				Part-No. 934-0408K			
			<b>Eisele</b>			Drawing-No. 934-0408K-00			ISO E 	
Date	modified	verified				in exchange for Date			replaced with Date	
									Revision	Blatt 2 von 2