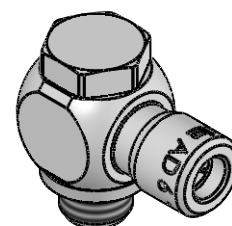


NW 4,5

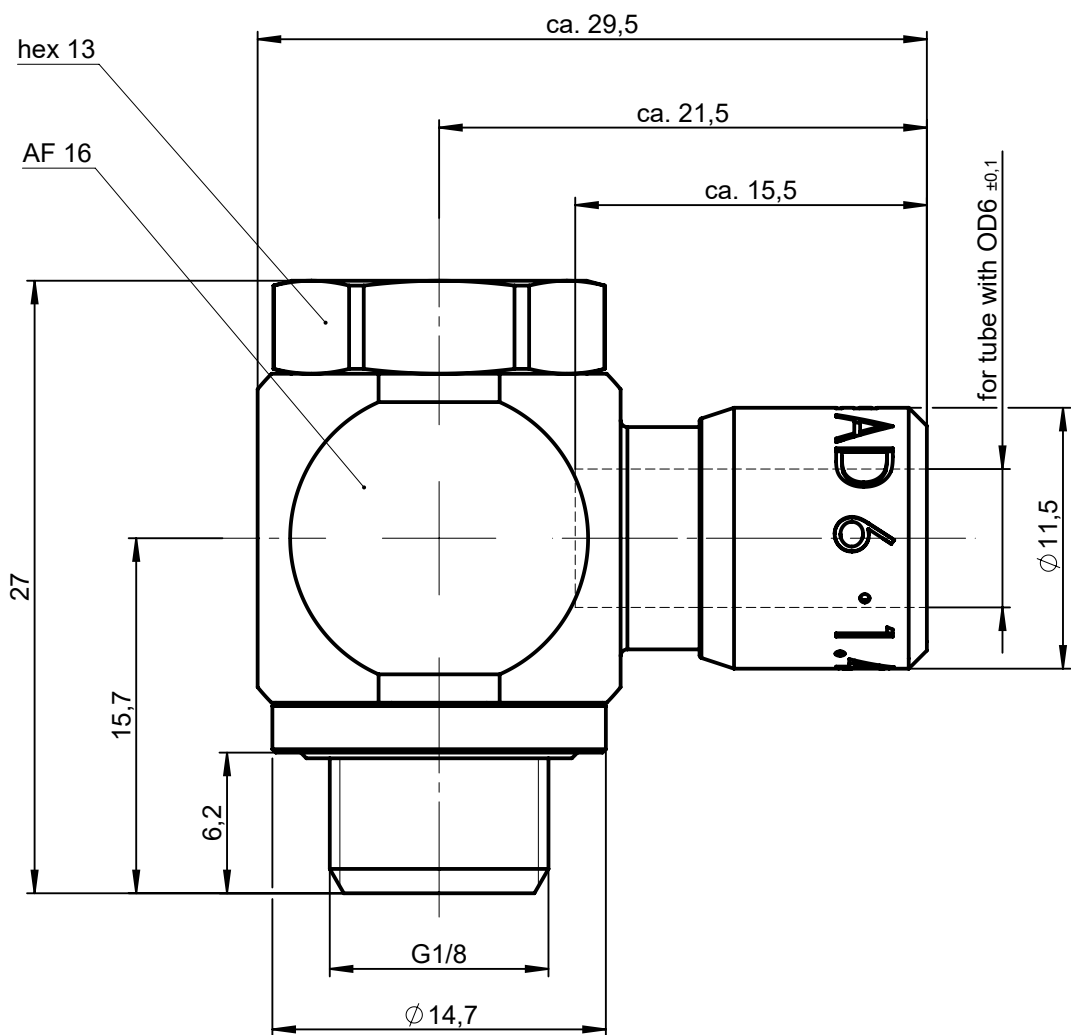


1:1

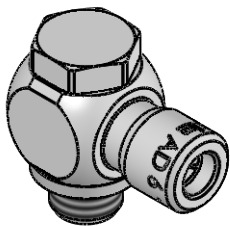
Werkstoff: 1.4301 / 1.4404  
Dichtungen: FPM

			Allgemeintoleranzen nach DIN ISO 2768-mH-E		<b>Maßblatt</b>		Gewicht ca. 35 g
Status: FREIGABE EINFACH				Datum	Name	Benennung <b>Schwenkanschluss einfach kurze Ausführung</b>	Maßstab
<b>0</b>			Erstellt	21.01.20	Sk		<b>3:1</b>
			Freig.	24.01.20	Si		
			Kunde				
			<b>Eisele</b>		Zeichng.-Nr. <b>934-0204K-00</b>		ISO E 
					Ersatz für vom Index		Ersetzt durch vom Index
Datum	geändert	geprüft					

All rights to these drawings belong exclusively to the company Eisele Pneumatics GmbH & Co. KG. The reproduction and / or dissemination and other abuse without our prior, explicit consent are inadmissible. Those who do not follow these directions are obliged to pay damages and are punishable by law.





ND 4,5



1:1

Material: 1.4301 (304) stainless steel / 1.4404 (316L) stainless steel  
Seals: FKM

			Standard Tolerances DIN ISO 2768-mH-E			Dimension Sheet				Weight ca. 35 g						
Status: FREIGABE EINFACH				Date	Name	single swivel connector short model					Scale					
Revision (Index):  0			Drawn	21.01.20	Sk						3:1					
			Appr.	24.01.20	Si											
			Client			Part-No. 934-0204K					ISO E 					
						Drawing-No. 934-0204K-00										
Date		modified	verified		in exchange for Date				Revision		replaced with Date		Revision		Blatt 2 von 2	