

Technical drawing of a 6-kt. 13 SW 16 valve. The drawing shows a side view of the valve with various dimensions and specifications.

Dimensions:

- Overall height: 27
- Height from base to center: 15,7
- Height from base to top of handle: 6,2
- Overall width: ca. 26,5
- Width of handle: ca. 18,5
- Width of body: ca. 12,7
- Base diameter: $\varnothing 14,7$
- Base thread: G1/8
- Handle diameter: $\varnothing 8,6$

Specifications:

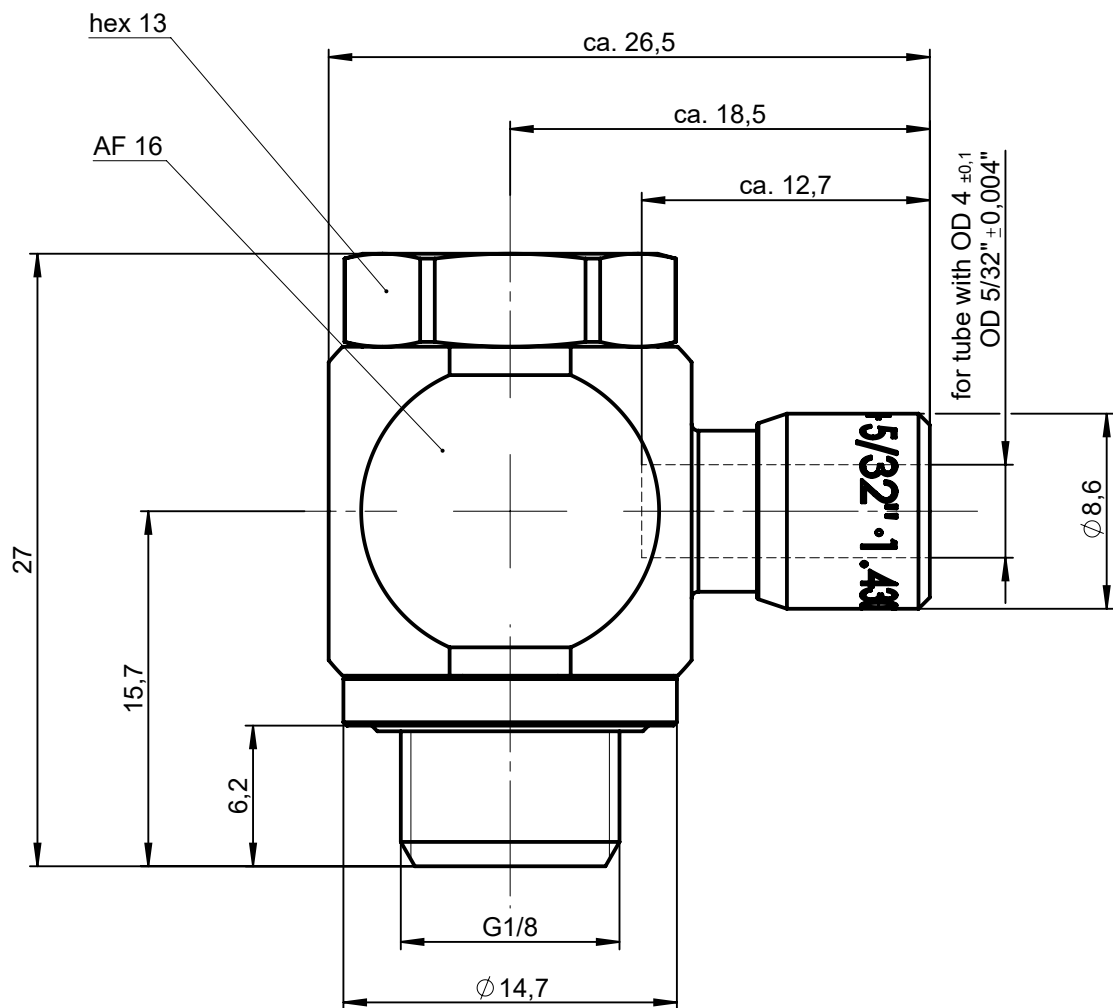
- 6-kt. 13
- SW 16
- für Schlauch mit Außen- $\varnothing 4 \pm 0,1$
- Außen- $\varnothing 5/32" \pm 0,004"$

1 : 1

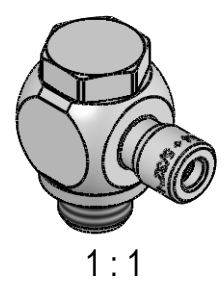
Dichtungen: FPM

			Allgemeintoleranzen nach DIN ISO 2768-mH-E		Maßblatt			Gewicht ca. 33 g			
Status: FREIGABE EINFACH				Datum	Name		Benennung		Maßstab		
Revision (Index): 0			Erstellt	21.01.20	Sk		Schwenkanschluss einfach kurze Ausführung		3:1		
			Freig.	24.01.20	Si						
			Kunde				Artikel-Nr.		934-0202K		ISO E 
					Zeichng.-Nr.		934-0202K-00				
			Ersatz für vom			Index		Ersetzt durch vom		Index	
Datum		geändert	geprüft								

All rights to these drawings belong exclusively to the company Eisele Pneumatics GmbH & Co. KG. The reproduction and / or dissemination and other abuse without our prior, explicit consent are inadmissible. Those who do not follow these directions are obliged to pay damages and are punishable by law.





ND 3



1:1

Material: 1.4301 (304) stainless steel / 1.4404 (316L) stainless steel
Seals: FKM

			Standard Tolerances DIN ISO 2768-mH-E		Dimension Sheet		Weight ca. 33 g					
Status: FREIGABE EINFACH				Date	Name	Title single swivel connector short model			Scale			
Revision (Index): 0			Drawn	21.01.20	Sk				3:1			
			Appr.	24.01.20	Si							
			Client			Part-No. 934-0202K						
						Drawing-No. 934-0202K-00			ISO E 			
Date		modified				verified	in exchange for Date		replaced with Date		Revision	
							Revision		Revision		Blatt 2 von 2	