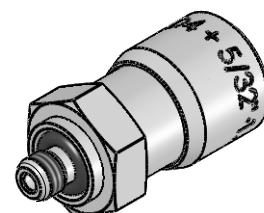


NW 1.2



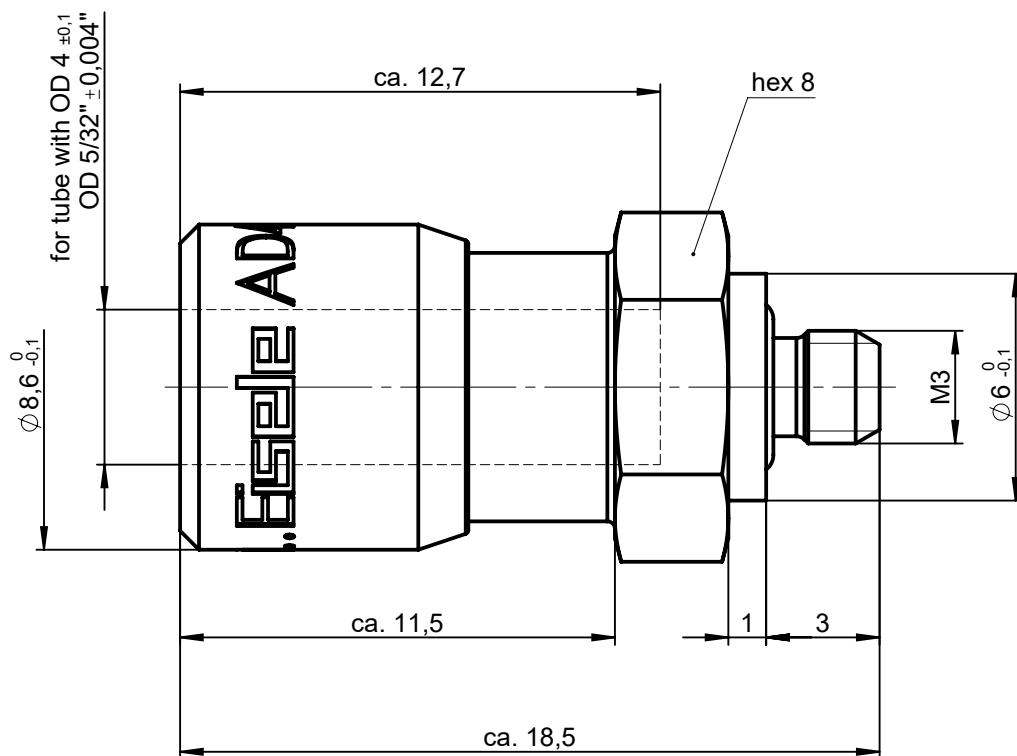
Anzugsmoment max. 36 Ncm!

M 2:1

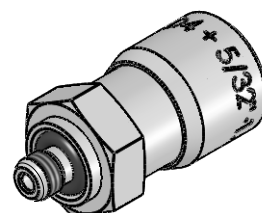
Werkstoff: 1.4301  
Dichtungen: FPM

			Allgemeintoleranzen nach DIN ISO 2768-mH-E		<b>Maßblatt</b>		Gewicht ca. 4 g
Status: FREIGABE EINFACH			Datum	Name	Benennung <b>Einschraubanschluss gerade</b>	Maßstab <b>5:1</b>	ISO E 
Revision (Index): <b>0</b>			Erstellt	CJ			
			Freig.	Sk			
			Kunde		Artikel-Nr.	929-4202	Blatt 1 von 2
					Zeichng.-Nr.	929-4202-00	
					Ersatz für	929 00/00-2	
					vom	03.06.04 Index A	
					Ersetzt durch		
					vom	Index	

All rights to these drawings belong exclusively to the company Eisele Pneumatics GmbH & Co. KG. The reproduction and / or dissemination and other abuse without our prior, explicit consent are inadmissible. Those who do not follow these directions are obliged to pay damages and are punishable by law.



ND 1.2



tightening torque max. 36 Ncm!

M 2 : 1

Material: 1.4301 (304) stainless steel  
Sealings: FKM

			Standard Tolerances DIN ISO 2768-mH-E		<b>Dimension Sheet</b>		Weight ca. 4 g
Status: FREIGABE EINFACH			Date	Name			Scale
Revision (Index):			Drawn	30.11.15	CJ	screw-in connector	
0			Appr.	17.01.20	Sk		
			Client			Part-No.	929-4202
			<b>Eisele</b>		Drawing-No.	929-4202-00	
Date	modified	verified			in exchange for Date	03.06.04	replaced with Date
					929 00/00-2 Revision	A	Blatt 2 von 2