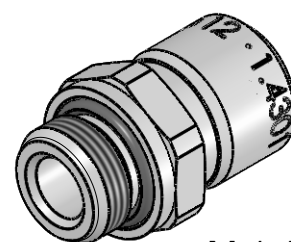



Technical drawing of a 1.4301 stainless steel fitting. The drawing shows a side view of the component with various dimensions and labels.

Dimensions and labels:

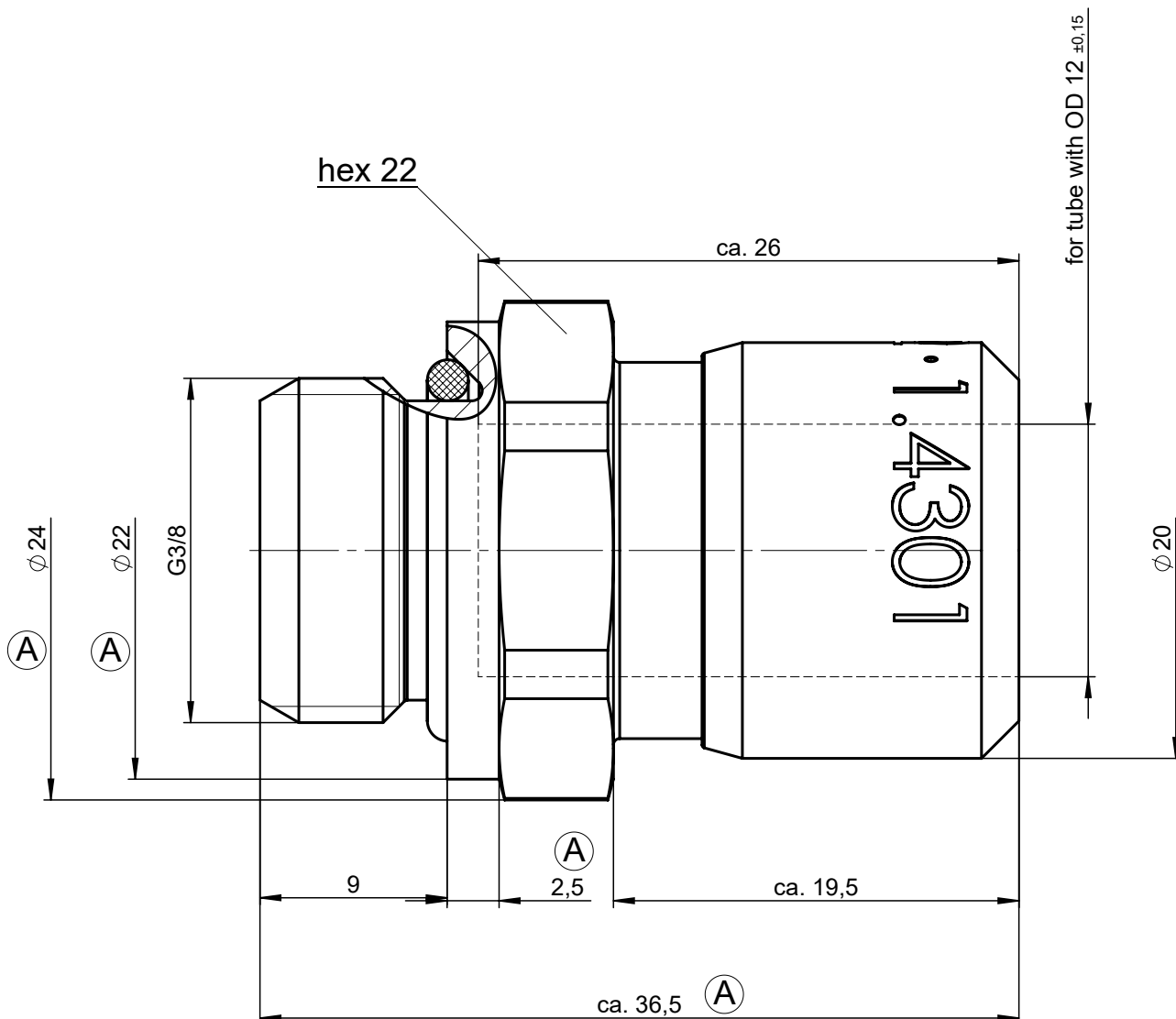
- Overall length: ca. 36,5
- Length of the first section: 9
- Length of the second section: 2,5
- Length of the third section: ca. 19,5
- Overall diameter: $\phi 24$
- Inner diameter: $\phi 22$
- Thread specification: G3/8
- Material grade: 1.4301
- Label: 6-kt. 22
- Label: für Schlauch mit



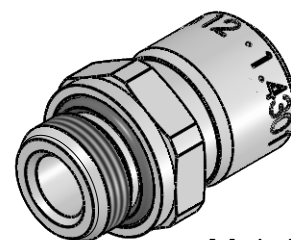
M 1:1

			Allgemeintoleranzen nach DIN ISO 2768-mH-E		<div>Maßblatt</div>		Gewicht ca. 43 g	
Status: FREIGABE EINFACH				Datum	Name	Benennung Einschraubanschluss gerade		Maßstab 3:1
Revision (Index): <div>A</div>			Erstellt	20.06.13	FT			
			Freig.	17.04.14	Oe			
			Kunde			Artikel-Nr. 928-0609		ISO E 
			<div>Eisele</div>			Zeichng.-Nr. 928-0609-00		
Datum	geändert	geprüft				Ersatz für 928 00/00-1 vom 07 07 98 Index B		Ersetzt durch vom Index

All rights to these drawings belong exclusively to the company Eisele Pneumatics GmbH & Co. KG. The reproduction and / or dissemination and other abuse without our prior, explicit consent are inadmissible. Those who do not follow these directions are obliged to pay damages and are punishable by law.



ND 9



M 1:1

Material: 1.4301 (304) stainless steel
Seals: FKM

			Standard Tolerances DIN ISO 2768-mH-E		Dimension Sheet			Weight ca. 43 g	
Status: FREIGABE EINFACH				Date	Name		Title		
Revision (Index): <div>A</div>			Drawn	20.06.13	FT		screw-in connector straight		
			Appr.	17.04.14	Oe				
			Client				Part-No. 928-0609		
<div><div>Date</div><div>modified</div><div>verified</div></div>			<div>Eisele</div>		Drawing-No. 928-0609-00			ISO E	
					in exchange for 928 00/00-1 replaced with			<div><div><div></div><div></div></div></div>	
					Date 07.07.98 Revision B Date				
								Revision	
								Blatt 2 von 2	