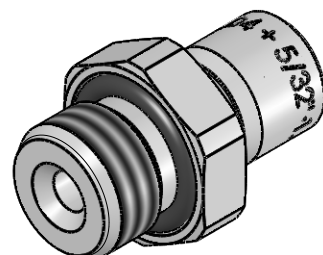


NW 3

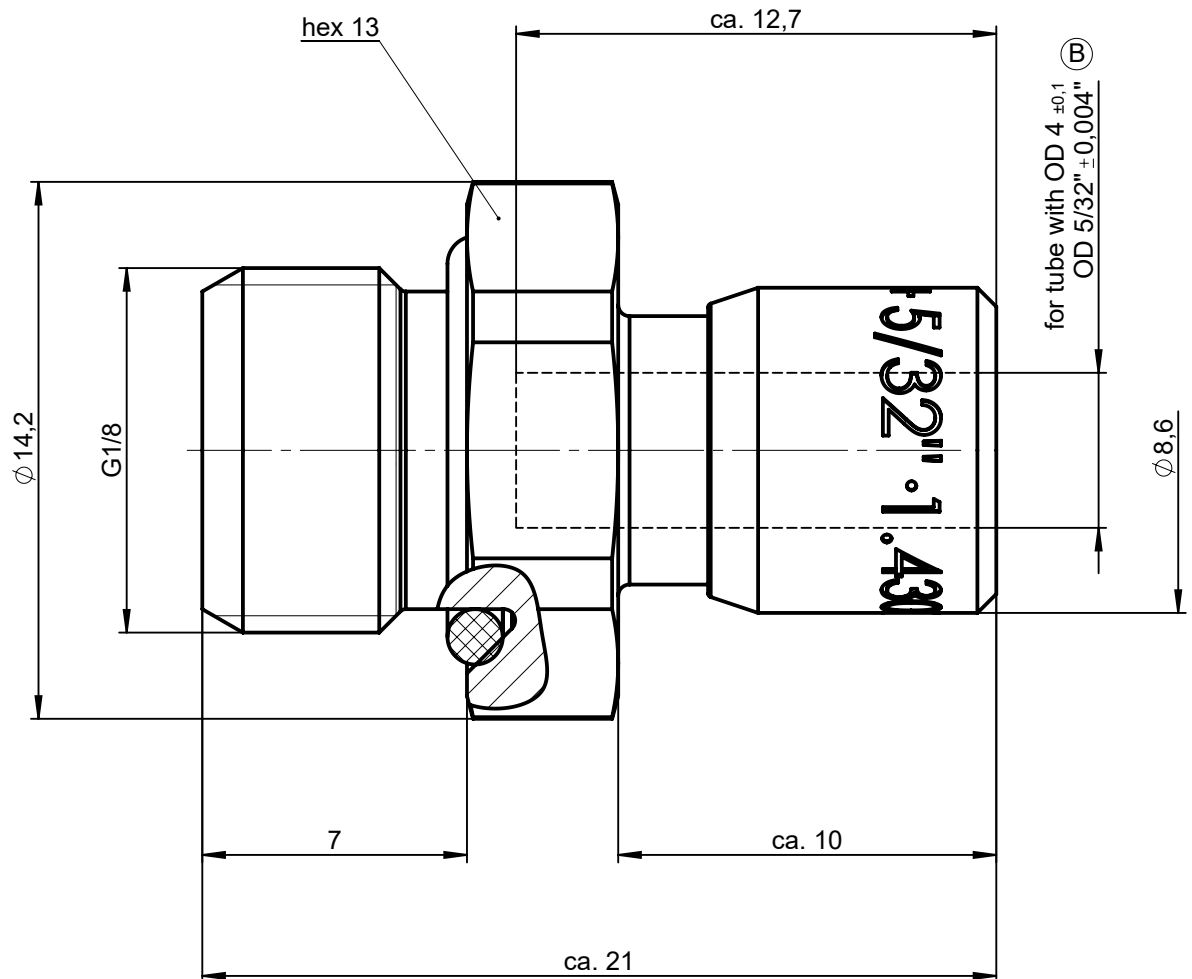


2:1

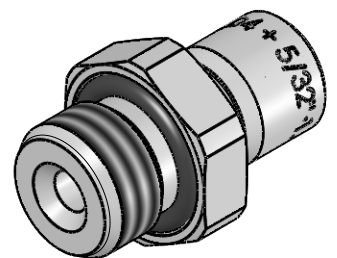
Werkstoff: 1.4301
Dichtungen: FPM

| | | | | | | | |
|---------------------------------------|----------------|---------------|---|----------|--|--|--|
| | | | Allgemeintoleranzen nach DIN ISO 2768-mH-E | | Maßblatt | | Gewicht ca. 9 g |
| Status: FREIGABE EINFACH | | | | Datum | Name | Benennung Einschraubanschluss gerade | Maßstab 5:1 |
| Revision (Index): <div>B</div> | | | Erstellt | 03.06.13 | Co | | |
| | | | Freig. | 04.06.13 | Mü | | |
| | | | Kunde | | | Artikel-Nr. 928-0202 | ISO E  |
| | | | <div>Eisele</div> | | Zeichng.-Nr. 928-0202-00 | | |
| | | | | | Ersatz für 928 00/00-1 vom 07.07.98 Index b | | |
| Datum 07.02.20 | geändert Sk | geprüft Ge | | | | | Blatt 1 von 2 |


All rights to these drawings belong exclusively to the company Eisele Pneumatics GmbH & Co. KG. The reproduction and / or dissemination and other abuse without our prior, explicit consent are inadmissible. Those who do not follow these directions are obliged to pay damages and are punishable by law.



ND 3

 $2:1$

Material: 1.4301 (304) stainless steel
Seals: FKM

| | | | | | | | | | | | |
|----------------------------|--|----------|--|----------|-----------------|---|--|-------------------|--|--|--|
| | | | Standard Tolerances DIN ISO 2768-mH-E | | Dimension Sheet | | | Weight ca. 9 g | | | |
| Status: FREIGABE EINFACH | | | | Date | Name | Title screw-in connector straight | | | Scale | | |
| Revision (Index): B | | | Drawn | 03.06.13 | Co | | | | 5:1 | | |
| | | | Appr. | 04.06.13 | Mü | | | | | | |
| | | | Client | | | Part-No. 928-0202 | | | | | |
| | | | Eisele | | | Drawing-No. 928-0202-00 | | | ISO E  | | |
| | | | | | | in exchange for 928 00/00-1 Date 07.07.98 Revision b | | | replaced with Date Revision | | |
| Date | | modified | verified | | | | | | | | |
| 07.02.20 | | Sk | Ge | | | | | | | | |