


Technical drawing of a 6-kt. 22 valve assembly. The drawing shows a side view of the valve with various dimensions and labels.

Dimensions:

- Overall length: ca. 31
- Length of the main body: 12
- Length of the handle: ca. 15,5
- Length of the handle base: ca. 12,5
- Thread specification: G3/8
- Outer diameter of the main body: $\varnothing 23,4$
- Outer diameter of the handle base: $\varnothing 11,5$

Labels:

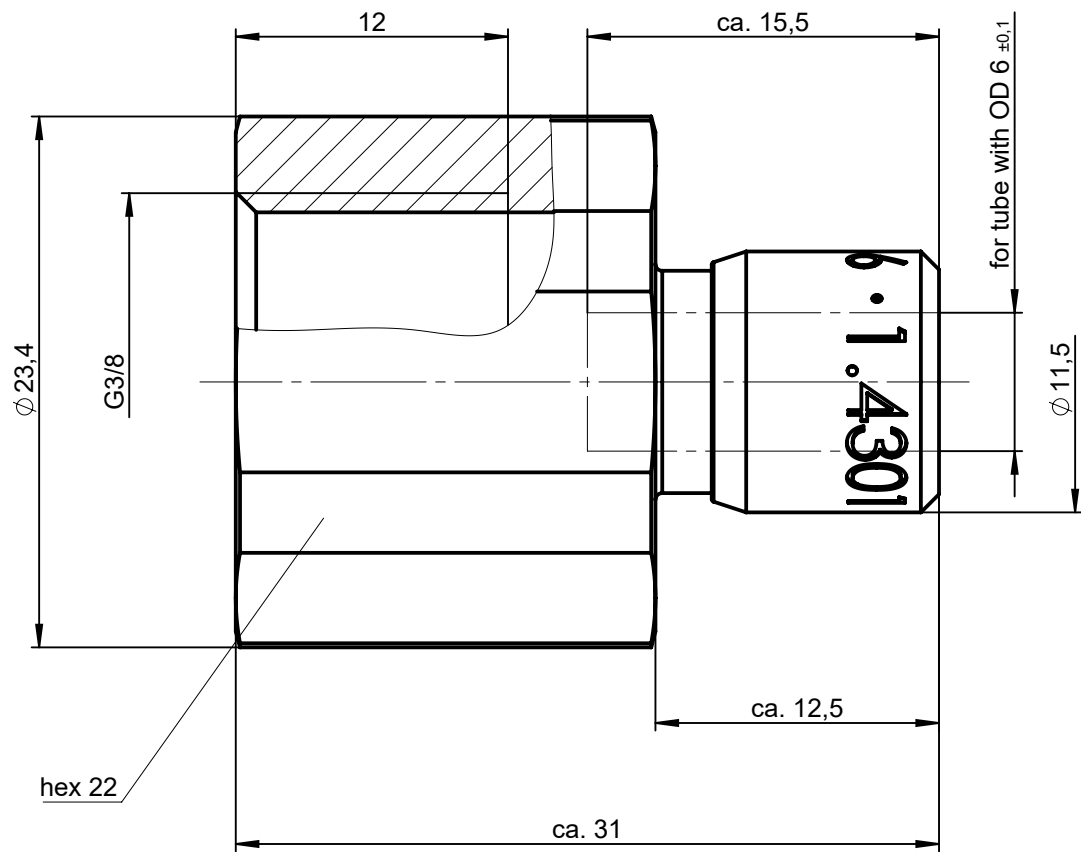
- 6-kt. 22 (6-position, 22)
- 6 · 1.4301 (Material specification)
- für Schlauch mit Außen- $\varnothing 6 \pm 0,1$ (For hose with outer diameter $\varnothing 6 \pm 0,1$)



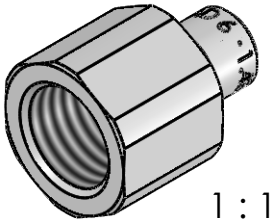
1 : 1

| | | | | | | | | | |
|-----------------------------------|----------|---------|---|----------|---------------------|---|---------------------|--|-------------------|
| | | | Allgemeintoleranzen nach DIN ISO 2768-mH-E | | <div>Maßblatt</div> | | Gewicht ca. 43 g | | |
| Status: FREIGABE EINFACH | | | | Datum | Name | Benennung Gerader Aufschraubanschluss | | Maßstab 3:1 | |
| Revision (Index): 0 | | | Erstellt | 16.01.20 | Sk | | | | |
| | | | Freig. | 20.01.20 | Pu | | | | |
| | | | Kunde | | | Artikel-Nr. 917-0504 | | ISO E  | |
| | | | <div>Eisele</div> | | | Zeichng.-Nr. 917-0504-00 | | | |
| Datum | geändert | geprüft | | | | | | | Ersatz für vom |
| | | | | | | | | Blatt 1 von 2 | |

All rights to these drawings belong exclusively to the company Eisele Pneumatics GmbH & Co. KG. The reproduction and / or dissemination and other abuse without our prior, explicit consent are inadmissible. Those who do not follow these directions are obliged to pay damages and are punishable by law.



ND 4,5



1 : 1

Material: 1.4301 (304) stainless steel
Seals: FKM

| | | | | | | | |
|--------------------------|----------|----------|--|------|--------------------------------------|----------|--------------------|
| | | | Standard Tolerances DIN ISO 2768-mH-E | | Dimension Sheet | | Weight ca. 43 g |
| Status: FREIGABE EINFACH | | | Date | Name | Title straight screw-on connector | | Scale |
| Revision (Index): | | | Drawn | Sk | | | 3:1 |
| 0 | | | Appr. | Pu | | | |
| | | | Client | | Part-No. 917-0504 | | ISO E |
| | | | Eisele | | Drawing-No. 917-0504-00 | | |
| Date | modified | verified | in exchange for Date | | replaced with Date | Revision | Blatt 2 von 2 |
| | | | | | | | |